

105mm

HDD-ROM TOOL FREE SCREW-LESS TRAY-LESS

An incredible 3-in-1 small multimedia storage solution



MRA358 MANUAL



Elegant aluminum design
Fits in any 5.25" drive bay
Two USB2.0/USB3.0 ports
Unique screwless design for hot-swapping 2.5" SATA hard drive
Accommodates 12.7mm slim optical drive

MRA358 Manual



MRA358

USB2.0/USB3.0

Features:

- Elegant aluminum/plastic panel design
- Fits in any 5.25" drive bay
- Two USB2.0/USB3.0 ports
- Unique screwless design for hot-swapping 2.5" SATA hard drive
- Accommodates 12.7mm slim optical drive

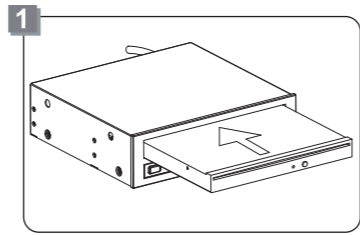
Specifications:

- Fit all 2.5" Serial ATA hard disk
- Supports hot swap
- Supports SATA III(6.0Gb/s)
- Housing Assembly: 138mm(L)x148mm(W)x42mm(H)
- Interface: SATA /USB2.0 /USB3.0
- Weight: U2(458g)/U3(484g)
- Operating Temperature: 0~55°C

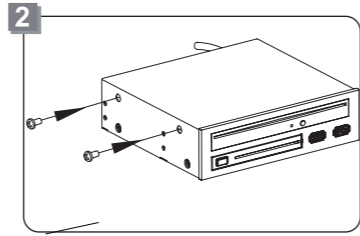
Package Content:

MRA358	1Pcs
SATA data cable	1Pcs
Fan power & access SATA cable	1Pcs
User manual	1Pcs
Screws 3x6pwn	4Pcs
Screws 2x3pm	2Pcs

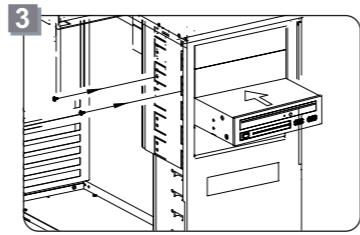
Installation :



Push 12.7mm slim optical drive into the slim drive bay.



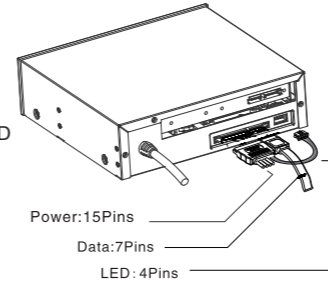
After pushing the slim optical drive into position to align with the front panel, use a magnetic screwdriver to secure two screws to the optical drive.



Place MRA358 into an available 5.25" bay in the chassis and secure with screws.

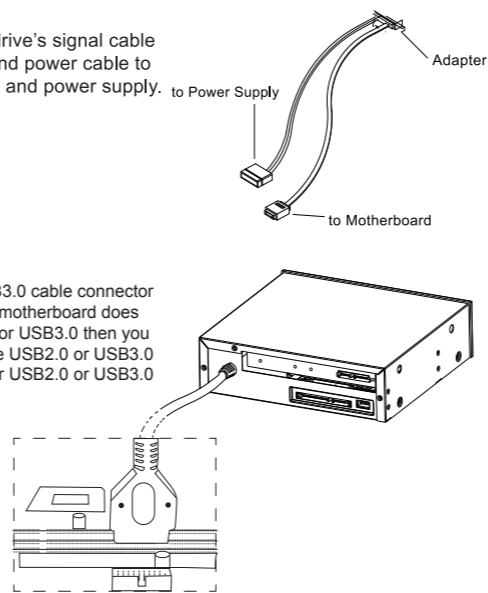
Connection :

- Insert the SATA 15P CONN. Into the MRA358's 15P conn. connect the big power 4P connector to the PC 4P power plug, and the small 4P LED wire connector to the 4P LED port at the back of MRA358.



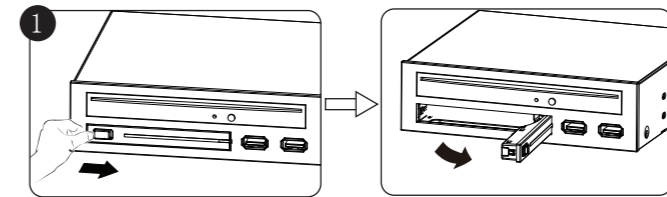
- Insert one end of the SATA 7P cable to MRAMRA358, another end(7P) to either the motherboard or the SATA RAID card.

- Plug your optical drive's signal cable (SATA or PATA) and power cable to your motherboard and power supply.

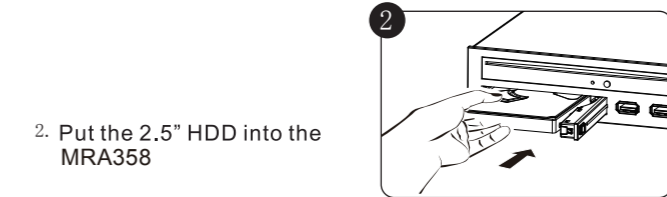


- Plug USB2.0 or USB3.0 cable connector motherboard.If your motherboard does not support USB2.0 or USB3.0 then you can use the alternate USB2.0 or USB3.0 connector instead for USB2.0 or USB3.0 operation only.

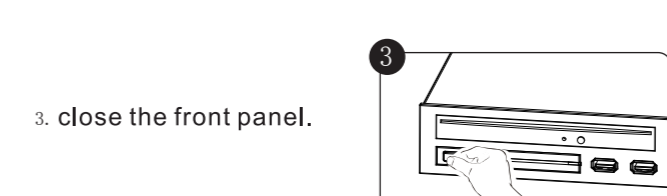
Inserting the Hard Drive:



- Pull the two keys of HDD-ROM gently from left to right to eject the panel.



- Put the 2.5" HDD into the MRA358



- close the front panel.

- After inserting HDD and closing the front door, carefully push the tray until it is seated into position.Excessive force may damage its mechanical parts.
- If the HDD is inserted backward into the tray, forcing the device may damage the MRA358 HDD-ROM.

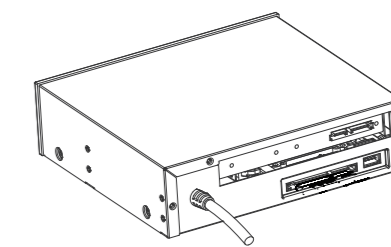
Removing the Hard Drive:

- Press the two bottoms of HDD-ROM gently to eject the panel.
- Open the front panel to take out the 2.5" hard drive, and close the upper panel firmly.

- Do not eject the HDD while it is busy
- Carefully take the HDD out from MRA358 HDD-ROM. The HDD can reach temperatures over 50°C. It will not burn the fingers but should be handled with care.

Statement

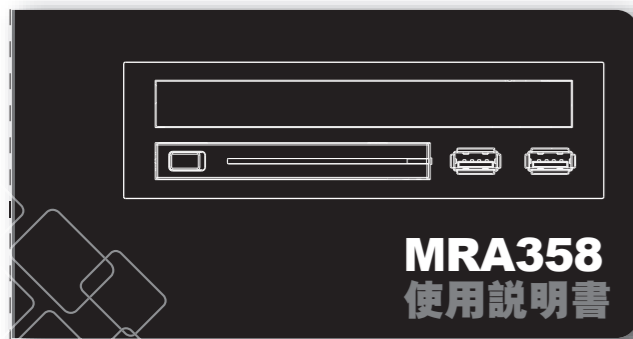
The contents of user's manual are protected under copyright law.Any organization or individual can not make copy and save it in the information bank or the retrieval system by any method or form without the authorization of Wingsonic. Wingsonic is not responsible for any loss in the process of using the HDD-ROM.



105mm

硬碟抽取盒

一個神奇的3合1小型多媒體儲存裝置



MRA358 使用說明書



高品質的鋁/塑膠面板
可搭配任何5.25" 硬碟仓位
支持雙USB 2.0/USB3.0 傳輸接口
支持獨特的免螺絲2.5" SATA硬碟架熱插拔
可兼容12.7mm薄型光驅

MRA358 使用說明書



MRA358

USB2.0/USB3.0

產品特色:

- 高品質的鋁/塑膠面板
- 可搭配任何5.25" 硬碟仓位
- 支持雙USB 2.0/USB3.0 傳輸接口
- 支持獨特的免螺絲2.5" SATA硬碟架熱插拔
- 可兼容12.7mm薄型光驅

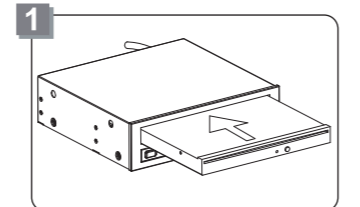
產品規格:

- 適用於所有2.5" SATA硬碟
- 提供熱插拔
- 支援 SATA III (6.0Gb/s)
- 產品規格: 138mm(L)x148mm(W)x42mm(H)
- 工作界面: SATA /USB2.0 /USB3.0
- 重量: U2(458g)/U3(484g)
- 工作溫度: 0~55°C

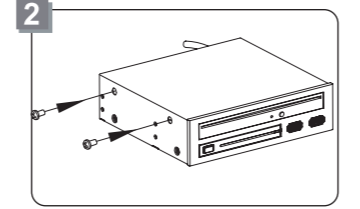
包裝內容:

MRA358 硬碟盒	1Pcs
SATA電源線	1Pcs
SATA 連接線	1Pcs
使用說明書	1Pcs
螺絲 3x6 Pwn	4Pcs
螺絲 2x3 Pm	2Pcs

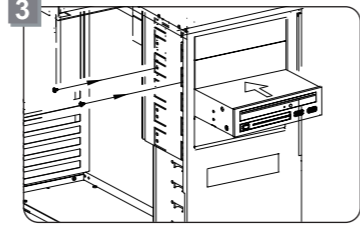
安裝步驟:



將12.7mm薄型光碟機推入光碟架中;



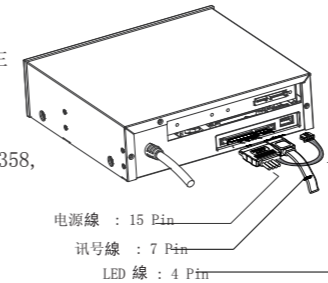
請確認薄型光碟機對準並密合於前面板, 並以螺絲起子將兩顆光碟機架用螺絲鎖固定;



安裝MRA358於機殼上的5.25" bay並以螺絲鎖固定於機殼;

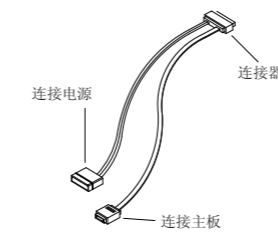
連接:

- 請將SATA 15P 端連接至MRA358之15P端口, 大4P電源線 與電腦主機電源相接, 小4P LED線 連接至MRA358後端之4P LED端。

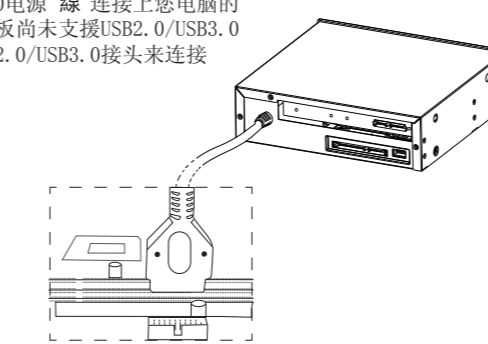


- 請將SATA 7P訊号线 一端連接MRA358, 另一端插入主機板訊号埠或者RAID卡上的訊号埠。如圖示:

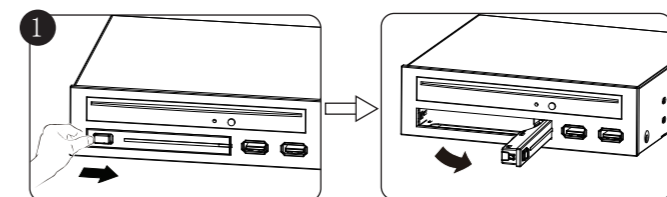
- 請將光碟機的電源線 (SATA或PATA) 對準並連接上電腦主機板與電源供應器;



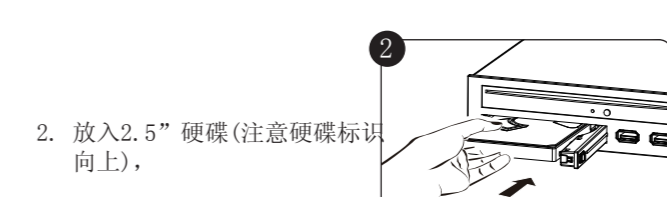
- 請將USB2.0/USB3.0電源線 連接上您電腦的主機板, 若您的機板尚未支援USB2.0/USB3.0 可使用替代的USB2.0/USB3.0接頭來連接主機板;



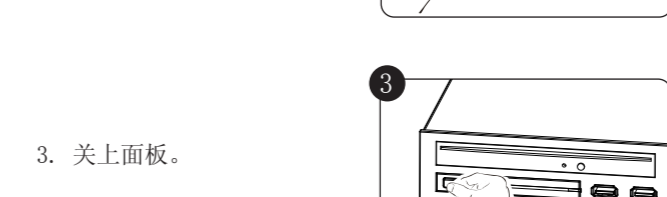
放置硬碟步驟:



- 輕輕推動HDD-ROM解鎖按鈕(從左至右), 使面板彈出;



- 放入2.5" 硬碟(注意硬碟標識向上);



- 关上面板。

- 插入硬碟並關上前面板時請小心輕輕推動前面板至鎖住狀態, 以免機構零件受損。
- 如果硬碟插入方向錯誤, 請不要關閉前門, 如強行關閉, MRA358 HDD-ROM會被損壞。

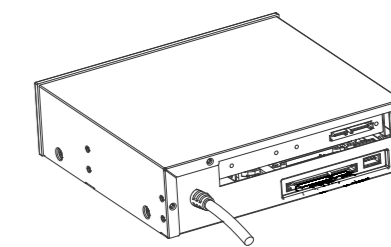
卸下硬碟步驟

- 輕輕推動HDD-ROM解鎖按鈕, 使面板彈出。
- 打開前面板, 取出2.5"硬碟, 再確實關閉上面板。

- 當工作狀態下禁止卸下硬碟。
- 硬碟表面溫度有可能高達50°C, 雖不會造成燙傷, 但仍要小心, 請接觸硬碟邊緣, 不要觸摸上面的電路板。

聲明

用戶手冊所包含的內容均受到版權法的保護未經台灣賀豪科技股份有限公司的批准, 任何組織或個人不得以任何手段或形式對其進行複製, 存於資料庫或檢索系統。對於在使用硬碟抽取盒過程中所造成的任何損失, 賀豪科技股份有限公司概不負責。



148mm

148mm