

76mm

MRA261L PRO SATA 硬碟抽取盒



使用者說明書

- 適用於2.5" SATA硬碟
- 支持SATA II (3.0Gb/s)
- NSS專利連接器，支持五萬次熱插拔
- 獨特的硬碟退出機構設計，專利保護
- 防摔防震設計，更加有效的保護硬碟
- LED指示燈，指示電源和硬碟讀寫動作
- 配置三角鎖，保護數據安全



110mm

產品規格

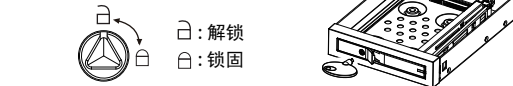
- ◎ 產品名稱: MRA261L PRO
- ◎ 作業系統: Windows Vista/XP/2000/98SE/ME; Win7/ Mac9.3 higher
- ◎ 傳輸界面: 支援SATA II (3.0Gb/s)
- ◎ 適用於2.5" SATA 硬碟
- ◎ 支援熱插拔
- ◎ 重量: 233.3g
- ◎ 尺寸大小: 140(L) X 101.6(W) X 25(H) mm
- ◎ 工作溫度: 0°~ 55°C

包裝內容

附件	數量
MRA261L PRO	1
SATA7P 訊號線	1
SATA15P to 大4P+小4P電源線	1
螺絲	4
說明書	1
絕緣貼片	1
鑰匙	1

開關鍵

用鑰匙解開三角鎖(逆時針旋轉90度)即可。



Specifications

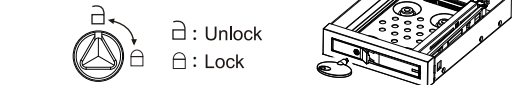
- ◎ Product name: MRA261L PRO
- ◎ OS: Windows Vista/XP/2000/98SE/ME; Win7 Mac9.3 higher
- ◎ Interface: Supports SATA II (3.0Gb/s)
- ◎ Fits all 2.5" SATA hard disk
- ◎ Supports hot swap
- ◎ Weight : 233.3g
- ◎ Dimensions : 140 (L) X 101.6 (W) X 25(H) mm
- ◎ Operation Temperature : 0° ~ 55°C

Package Content

Accessories	Quantity
MRA261L PRO	1 pcs
SATA 7P Data Cable	1 pcs
SATA15P to 4P+4P Power Cable	1 pcs
Screw	4 pcs
Manual	1 pcs
Insulating pad	1 pcs
key	1 pcs

Switching key

Triangular lock unlock with the key (counter-clockwise rotated 90 degrees).



110mm

MRA261L PRO Serial ATA HDD-ROM



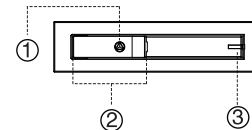
USER'S MANUAL 2.5" Internal enclosure

- Fits all 2.5" SATA hard disk
- Support SATA II (3.0Gb/s)
- NSS patent connector, support 50,000 times hot swap
- Patented HDD eject / eject apparatus to protect HDD
- The shockproof design gives better protection to HDD
- LED indicator, for power and access
- With triangle lock, protect your data security



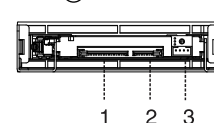
前面板

1. 硬碟抽取開鎖
2. 硬碟抽取拉門
3. 硬碟讀寫指示燈

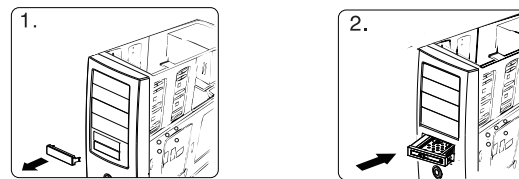


後面板

1. SATA電源連接器(15P)
2. SATA數據連接器(7P)
3. LED訊號連接器(4P)

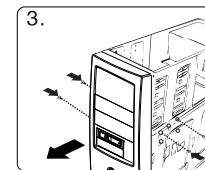


安裝



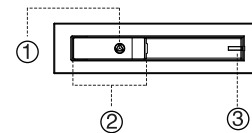
1. 卸下電腦機箱前方3.5"空槽面板(軟體驅動器空間)
2. 小心插入MRA261L PRO HDD-ROM 並推至底使之與機箱前面板平齊, MRA261L PRO 孔位與機箱孔位對齊。

3. 每邊使用2個螺絲, 4孔固定。



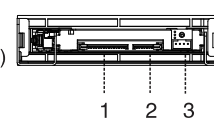
Front panel

1. Lock
2. Easy latch door
3. HDD LED indicator

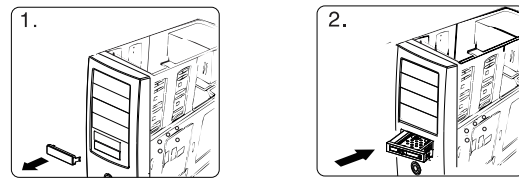


Rear panel

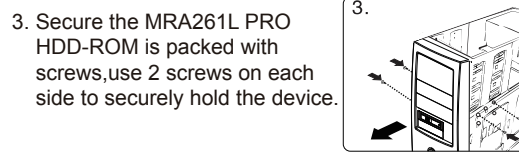
1. SATA power connector (15P)
2. SATA data connector (7P)
3. LED access port (4P)



Installation

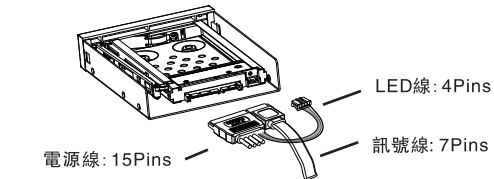


1. Remove the slot cover of an empty 3.5" floppy bay.
2. Carefully insert the MRA261L PRO HDD-ROM into the bay and push it inward until the MRA261 PRO HDD-ROM's screw hole is aligned with the hole of the bay.



連接

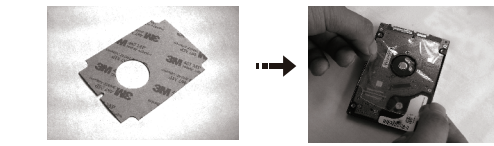
1. 請將SATA15P端連接至MRA261L PRO 之15P端口, 大4P電源線與電腦主機電源相接, 小4P LED線連接至MRA261L PRO 後端之4P LED端;
2. 請將SATA7P 訊號線一端連接MRA261L PRO, 另一端插入主機板訊號埠或者RAID卡上的訊號埠。如圖。



1. 4P LED必須插入MRA261L PRO 後端連接埠, 否則LED無法亮。
2. 線材與電腦主機或與MRA261L PRO HDD-ROM 相接前, 務必確認兩端均無雜物附著在端子上面, 以免造成電性短路。

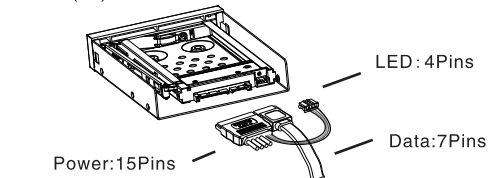
安裝硬碟基本步驟

1. 取出絕緣貼紙, 依圖示貼于硬碟上;



Connect the HDD-ROM cable

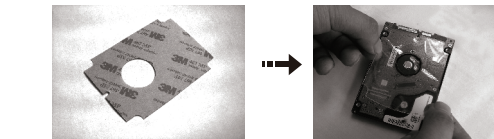
1. Insert the SATA 15P conn. into the MRA261L Pro's 15P conn., connect the big power 4P connector to the PC's 4P power plug, and the small 4P LED wire connector to the 4P LED port at the back of MRA261L PRO.
2. Insert one end of the SATA 7P cable to MRA261L PRO, another end (7P) to either the mother board or the SATA RAID card



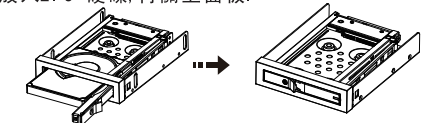
1. Be sure to connect the 4P LED wire, or the LED indicator will not be lighted up.
2. Before connecting the patent 7+15P SATA cable with the PC or with MRA261L PRO HDD-ROM, please check there is no object on or beside the terminals that may effect the mechanical assembly or become a possible source of an electrical short.

Install HDD

1. Attach the included mylar film as shown.



2. 用鑰匙解開三角鎖(逆時針旋轉90度), 拉開硬碟抽取拉門, 打開前門
3. 放入2.5"硬碟, 再關上面板。



1. 插入硬碟並關上前面板時, 請小心輕輕推動前面板至鎖住狀態, 以免機構零件受損。
2. 如果硬碟插入方向錯誤, 請不要關閉前門, 如強行關閉, MRA261L PRO HDD-ROM會被損害。

卸下硬碟步驟

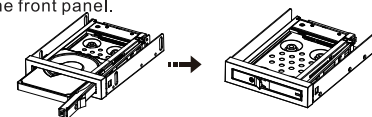
1. 使用鑰匙解開三角鎖(逆時針旋轉90度), 拉開硬碟抽取拉門, 打開前門
2. 將硬碟從HDD-ROM中取出, 關好HDD-ROM前門, 使用鑰匙對准三角鎖順時針旋轉90度鎖定。

1. 當工作狀態下禁止卸下硬碟。
2. 硬碟表面溫度有可能高達50°C, 雖不會造成燙傷, 但仍要小心, 請接觸硬碟邊緣, 不要觸摸上面的電路板。

聲明

用戶手冊所包含的內容均受到版權法的保護未經台灣賀豪科技股份有限公司的批准, 任何組織或個人不得以任何手段或形式對其進行複製, 存於資料庫或檢索系統。對於在使用硬碟抽取盒過程中所造成的任何損失, 賀豪科技股份有限公司概不負責。

2. Triangular lock unlock with the key (counter-clockwise rotated 90 degrees), open the panel;
3. Put the 2.5" HDD into the MRA261L PRO and close the front panel.



1. After inserting HDD and closing the front door, carefully push the tray until it is seated into position. Excessive force may damage its mechanical parts.
2. If the HDD is inserted backward into the tray, forcing the device may damage the MRA261L PRO HDD-ROM.

Eject HDD from the HDD-ROM

1. Use the key "Anti-clockwise 90°" to open the door .
2. Take the HDD out from HDD-ROM , and firmly close the front door .use the key "Clockwise 90°" to lock the door .

1. Do not eject the HDD while it is busy
2. Carefully take the HDD out from MRA261L PRO HDD-ROM. The HDD can reach temperatures over 50°C. It will not burn the fingers but should be handled with care.

Statement

The contents of user's manual are protected under copyright law. Any organization or individual can not make copy and save it in the information bank or the retrieval system by any method or form without the authorization of Wingsonic. Wingsonic is not responsible for any loss in the process of using the HDD-ROM.