

# HDD-ROM MRA201

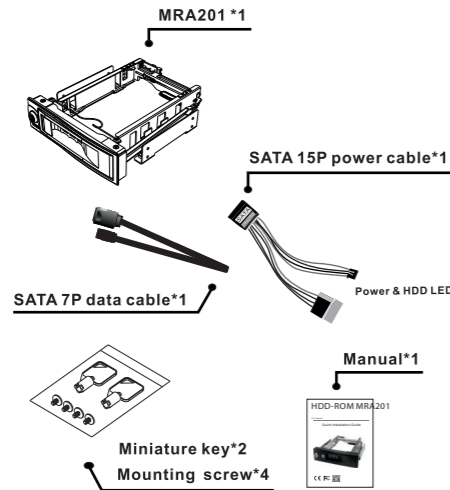
3.5" Internal

## Quick Installation Guide



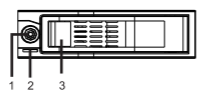
### Content Description

This package is completed with these items:  
MRA201 HDD-ROM\*1; SATA 15P power cable\*1;  
SATA 7P data cable\*1; Manual\*1; Key\*2; Screw\*4



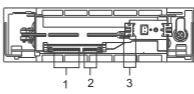
### Parts

#### Front panel



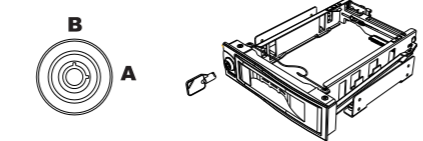
- 1.Key lock
- 2.LED indicator (for Power & Access)
- 3.Spring lock

#### Rear panel



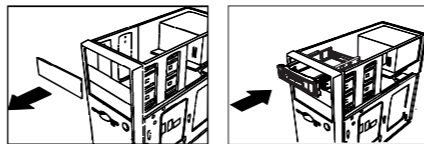
- 1.SATA power connector(15P)
- 2.SATA data connector(7P)
- 3.Power &HDD LED are connected through a small 4P connector

#### Key lock

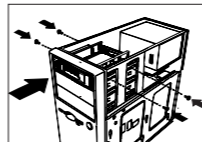


- A: Lock  
B:Unlock

### Installation



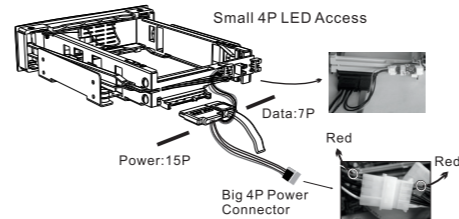
- 1.Remove the cover of an empty drive bay
- 2.Smoothly insert MRA201 HDD-ROM into the bay and push it inward until the MRA201 HDD-ROM's screw hole is aligned with the hole of the bay



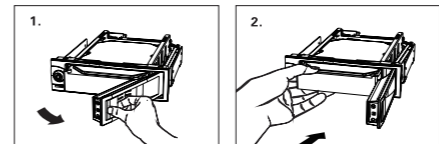
- 3.Secure MRA201 is packed with screws, use two screws on each side to securely hold the device
- 4.While installing, the direction must be right. The lock at left, the pivot of the door at right

### Connection

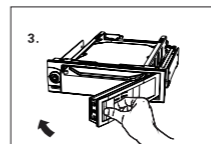
1. Connect one end of the SATA 15P power cable(15P) to the rear side of MRA201, another end (big 4P power) to the power port in the PC case
- 2.Connect the small 4P port of SATA power cable (15P) to the PCB's joint on the back of MRA201 HDD-ROM
- 3.Connect the SATA 7P data cable to the conn. on the back of MRA201, and to the SATA 7P data port on the main board or on the SATA RAID card



### Basic Usage



- 1.Pull the spring lock to open the front door
- 2.Place the HDD into MRA201 with its printed label up sided and make sure the HDD connector is inserted into MRA201



- 3.Press the door to push the hard drive into MRA201 until the door is locked

**!** The door will not be closed firmly if HDD is inserted in wrong direction. The HDD-ROM will get damaged if the door is closed with force.

### Unloading Hard Drive

- 1.Smoothly pull the spring lock to open the door. Make Sure the key lock is on a removable position, or the lock would get damaged
- 2.Carefully take the hard drive out from MRA201

**!** HDD may reach a temp. of 50°C, it will not burn hands, but still need to be careful. Hold the HDD by its edge please, do not touch its PCB

- 1.If your main board dose not support SATA II (SATA 3.0),please adjust/change the pin tap from to be which is under SATA I mode.(SATA1.5Gb/s)
- 2.Please operate the HITACHI HDD carefully while ejecting it out from MRA201, or the protruding FPC Connector on its PCB will be unexpectedly damaged

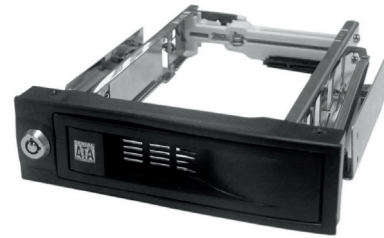
### Frequently Asked Question

- Q: Why the hard disk is delayed occasionally in being recognized during the hot swap process?  
A: This is normal case due to the specifications of hard disk or the control card for hard disk differs.
- Q: Why the LED indicator for reading and writing does not light up sometimes after the hard disk has been inserted into the product?  
A: There are two versions of SATA hard disk, SATA I and SATA II. The SATA II version has the output for hard disk reading and writing signal, while the SATA I version does not have. Therefore, the LED reading and writing indicator will not light up under SATA I hard disk.
- Q: Why the LED indicator for reading and writing does not flash sometimes after the hard disk has been inserted into the product?  
A: This is connected with the features of reading and writing signal of the hard disk, and is a normal case.

# HDD-ROM MRA201

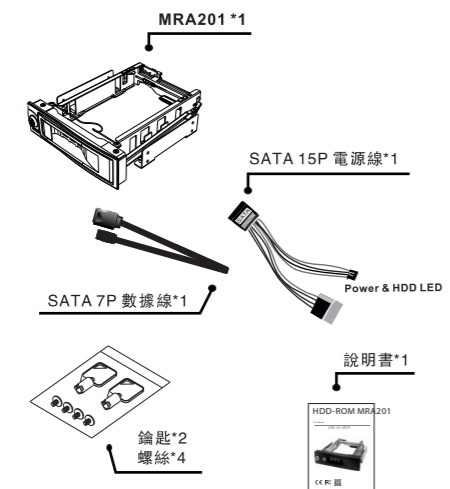
3.5" Internal

## 快速安裝指南



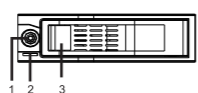
### 內容描述

檢查包裝內容  
MRA201 HDD-ROM\*1; SATA 15P 電源線\*1;  
SATA 7P 數據線\*1; 說明書\*1; 鑰匙\*2; 螺絲\*4



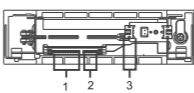
### 位置說明

#### 前面板



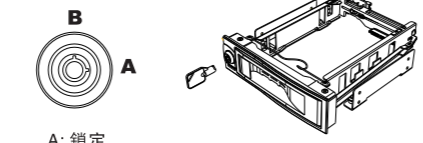
- 1.鎖
- 2.LED燈(電源與資料讀取)
- 3.硬碟抽取門把手

#### 後面板



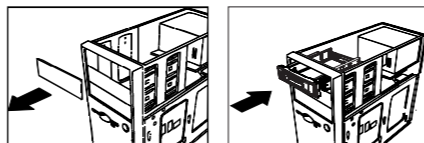
- 1.SATA 電源連接器(15P)
- 2.SATA 數據連接器(7P)
- 3.Power和HDD LED由一組小4P插頭連接

#### 鎖

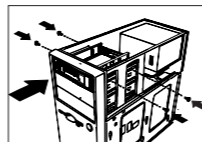


- A: 鎖定  
B: 解鎖

### 安裝MRA201 HDD-ROM



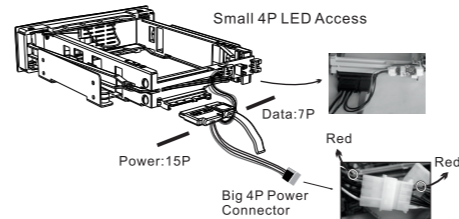
- 1.使用電腦主機5.25吋空槽位
- 2.小心插入MRA201 HDD-ROM並推動至前面板, MRA201 HDD-ROM螺絲孔位對齊至機箱孔位



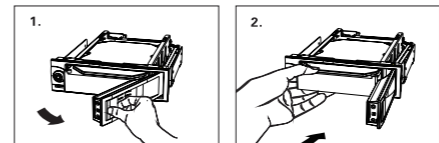
- 3.每邊使用2個螺絲,4孔固定
- 4.裝置時,方向需正確,門鎖在左,門軸在右

### 連接MRA201 HDD-ROM

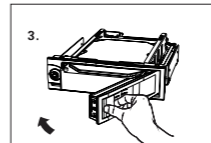
1. 取出SATA 15P電源線將一端(SATA 15P)接於MRA201 HDD-ROM 後端的連接器接口,另一端(大4P電源)與機箱內的大4P電源線接口相接.請注意相接時兩端線材顏色需一致
2. 連接SATA 15P電源線的小4P端子接至MRA201 HDD-ROM後端的PCB(電路板)與之配套的接口處
3. 取出SATA 7P數據線,並分別連接於MRA201 HDD-ROM後端的連接器接口與主機(或SATA陣列卡)上的SATA 7P接口上



### MRA201 HDD-ROM基本使用



1. 先解鎖,拉開硬碟抽取盒門把手,打開前門
2. 放入硬碟(注意硬碟標籤向上)到MRA201 HDD-ROM 並確認硬碟連接到MRA201 HDD-ROM



3. 關門並推動硬碟到 MRA201 HDD-ROM 鎖好,

**!** 如果硬碟插入方向錯誤,請勿強行關門,否則將會損害 MRA201 HDD-ROM.

### 從MRA201 HDD-ROM 卸下硬碟

1. 平順轉動鑰匙與鎖頭直至可抽取位置(開),若鎖頭未轉至適當位置並強行開門,將會損害鎖頭或門把手
2. 小心從MRA201 HDD-ROM取出硬碟

**!** 當從MRA201 HDD-ROM 取出硬碟時,溫度可能達到50°C高溫雖不會燒傷手指,但仍要小心.請接觸硬碟的邊緣,不要觸摸上面的電路板

1. 硬碟是精密設備,要特別注意.請預先閱讀使用說明書
2. 當工作狀態下禁止卸下硬碟
3. 請接觸硬碟的邊緣,不要觸摸上面的電路板
4. 對於產品故障問題,本司提供維修服務,不承擔任何產品的軟硬體或資料遺失等責任
5. 若您的主機板無法支援SATAII硬碟(SATA 3.0)請將硬碟後方的塞PIN由 改為 形成SATAI模式(SATA1.5Gb/s)
6. 由於HITACHI硬碟背面PCB上的連接器機構突出設計,當插拔硬碟時請特別小心留意,以免損壞您的硬碟!

### 常見問題

- 問: 為什麼在使用本產品時,有些硬碟在熱插拔時產生延遲反應?  
答: 這是因為硬碟或硬碟控制卡本身的性能並不相同,此屬正常現象。
- 問: 為什麼在使用本產品時,有些硬碟讀寫指示燈會亮而有些不會亮呢?  
答: 目前市售的SATA硬碟有 SATA I 及 SATA II 兩種規格. SATA II 代硬碟設計時在介面預留了硬碟讀寫指示信號輸出, 但SATA I 代硬碟沒有此一功能. 故在使用SATA I 代硬碟時,沒有讀寫指示而SATA II 代硬碟有。
- 問: 為什麼在使用本產品時,有些硬碟讀寫指示燈會閃而有些不會閃呢?  
答: 這是正常的現象,這與硬碟提供的讀寫指示信號特徵有關。