

size:85x110mm

# MRA267

4 x 2.5" SATA/SAS 硬碟抽取盒  
4 x 2.5" SATA 硬碟抽取盒



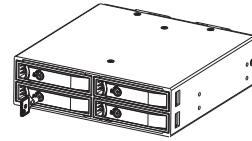
CE FC

使用說明書

## 產品說明

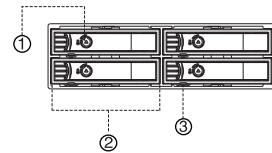
### 開關鍵

用鑰匙解開三角鎖(順時針旋轉90度)即可。



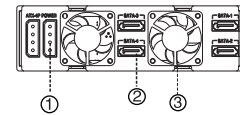
### 前面板

1. 硬碟抽取開鎖
2. 把手卡扣
3. 硬碟讀寫指示燈



### 後面板

1. ATX-4P 電源連接器
2. SATA 數據連接器
3. 風扇



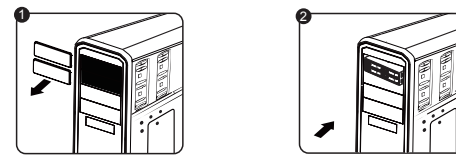
### 包裝內容:

- MRA267 (x1)
- SATA 訊號線 (x4)
- 機殼固定螺絲 (x8)
- 硬碟固定螺絲 (x16)
- 說明書 (x1)
- 鑰匙 (x2)

## 產品規格:

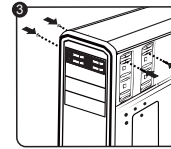
作業系統: Windows/Mac  
 電源指示燈: 通電插入硬碟後藍色指示燈長亮  
 讀寫指示燈: 藍色指示燈閃爍  
 風扇: 風扇故障報警時, 紅藍交替閃爍  
 支援熱插拔  
 重量: 740g  
 產品尺寸: 151(L)x146(W)x42(H)mm  
 工作溫度: 0~55°C  
 1. 4 x 2.5" SATA/SAS  
 傳輸介面: 支援 SATA I/II/III (6.0Gb/s)  
 適用於 2.5" SATA/SAS 硬碟, 支持 7~15mm 厚度  
 2. 4 x 2.5" SATA  
 傳輸介面: 支援 SATA I/II (3.0Gb/s)  
 適用於 2.5" SATA 硬碟, 支持 7~15mm 厚度

## 安裝



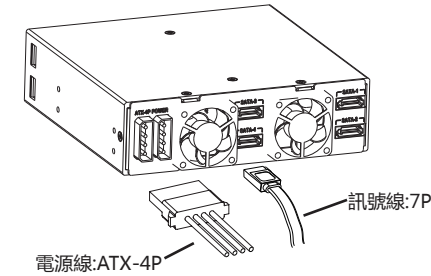
1. 卸下電腦機箱前方 5.25" 空槽面板。(CD-ROM 空間)
2. 小心插入 MRA267 並推至底使之與機箱前面板平齊, MRA267 孔位與機箱孔位對齊。

3. 每邊使用 4 個螺絲, 8 孔固定。



## 連接

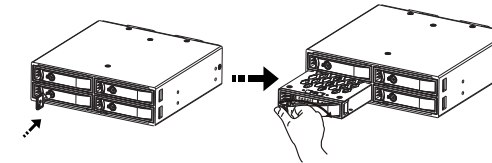
1. 請將電腦機箱電源上的 ATX-4P 電源線連接至 MRA267 之電源端口。
2. 請將 SATA 7P 訊號線一端連接 MRA267, 另一端插入主機板訊號埠, 如圖:



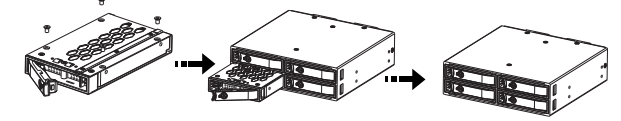
⚠ 正常使用僅接一個 ATX-4P 接頭即可, 如發現硬碟供電不足, 請接兩個 ATX-4P 電源, 同時供電。

## 安裝硬碟基本步驟

1. 用鑰匙解開三角鎖(順時針旋轉), 拉開硬碟抽取拉門, 打開前門。



2. 取出 Tray, 放入 2.5" 硬碟鎖上螺絲, 再把 Tray 放入外殼, 關上面板。



1. 插入硬碟並關上面板時, 請小心輕輕推動前面板至鎖住狀態, 以免機構零件受損。
2. 如果硬碟插入方向錯誤, 請不要關閉前門, 如強行關閉 MRA267 會被損害。

## 卸下硬碟步驟

1. 使用鑰匙解開三角鎖(順時針旋轉90度), 拉開硬碟抽取拉門, 打開前門。
2. 將硬碟從 MRA267 中取出, 關好 MRA267 前門, 使用鑰匙對準, 三角鎖逆時針旋轉 90 度鎖定。

### 聲明

用戶手冊所包含的內容均受到版權法的保護未經本公司的批准, 任何組織或個人不得以任何手段或形式對其進行複製, 存於資料庫或檢索系統, 對於在使用硬碟抽取盒過程中所造成的任何損失, 本公司概不負責。

# MRA267

4 x 2.5" SATA/SAS HDD Enclosure  
4 x 2.5" SATA HDD Enclosure



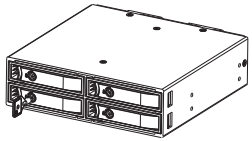
CE FC

User Manual

## Product diagram

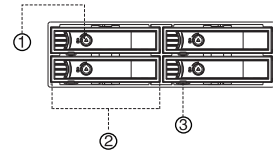
### Lock

Use the key to unlock it by rotating the key 90 degrees clockwise.



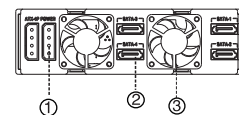
### Front view

1. Lock
2. Tray release latch
3. LED indicator



### Back view

1. 4P Molex Power port
2. SATA data port
3. Fan



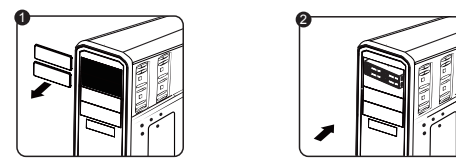
### Package Content:

- SATA data cable (x4)
- Frame screws (x8)
- HDD tray screws (x16)
- key (x2)
- User manual (x1)

## Specifications

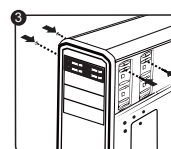
Operating Systems : Windows/Mac  
 Assembly Space : 1 x 5.25" CD-ROM space  
 LED indicator:  
 Solid blue for power and blinking blue for HDD access.  
 Blinking red for Fan malfunction, alternating red and blue flashing.  
 Material : Aluminum, SPCC, SUS430 stainless steel, PC  
 Dimensions : 151(L)x146(W)x42(H)mm  
 Weight : 740g  
 Operation Temperature : 0~55°C  
 1. 4 x 2.5" SATA/SAS  
 Interface : Support SATA I/II/III (6.0Gb/s)  
 Supported HDD type : 4 x 2.5" SATA/SAS HDD, 7~15mm  
 2. 4 x 2.5" SATA  
 Interface : Support SATA I/II (3.0Gb/s)  
 Supported HDD type : 4 x 2.5" SATA HDD, 7~15mm

## Hardware Installation



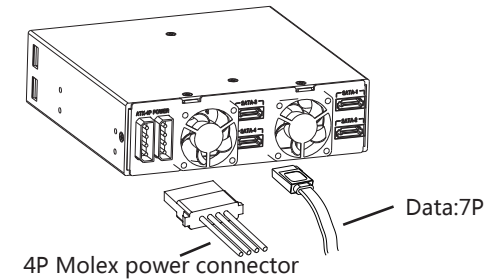
1. Remove the panel from the available 5.25" bay
2. Insert the MRA267 into the bay and screw it to the chassis.

3. Fix four screws on each side, eight screws in total.



## Connect the cables

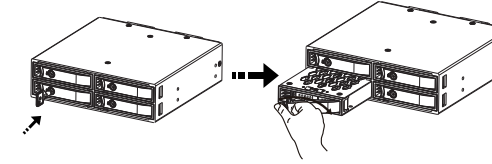
Connect the MRA267 to the motherboard with the included SATA data cables and to power with a 4P Molex power cable



⚠ If the power is not enough or is unstable, please use two power cables.

## HDD Installation

1. If the door is locked, use the key to unlock it. Squeeze the latch to release the door handle, pull the door handle open.



2. Slide the tray out of the enclosure, insert the HDD into the tray and fixed it by 4 screws on the bottom. Slide the tray into the enclosure and close the door. Lock the door if needed.



### Note

1. Hard drive is a precision device, please read the HDD manual in advance before use.
2. Do not force to close the door if inserting the HDD in wrong direction, or the HDD enclosure will be damaged.
3. Do not remove the hard drive during working condition.
4. Be aware of the heat since the hard drive may reach temperature up to 50°C.
5. We provide repair service for defective product, and do not take responsibility for data loss that caused by manual operation mistake.