

# MRA258 Series

## User Manual

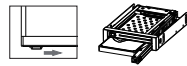


### TOOL FREE SCREW-LESS [ HDD-ROM ] 2 x 2.5" internal HDD enclosure

#### Product diagram

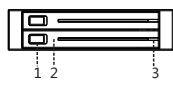
MRA258/MRA258T

**Switching button**  
Switch the button to the right side to open the panel.



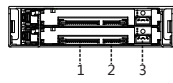
#### Front view

1. Switching button
2. Front panel
3. LED indicator

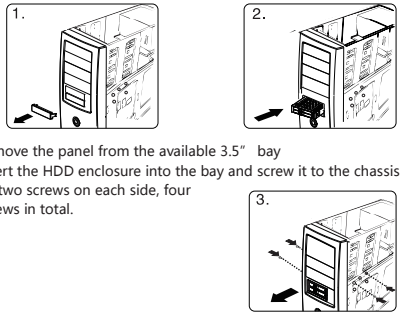


#### Back view

1. SATA power port (15P)
2. SATA data port (7P)
3. LED port (4P)



#### Hardware Installation



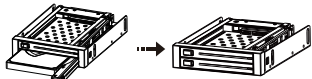
1. Remove the panel from the available 3.5" bay
2. Insert the HDD enclosure into the bay and screw it to the chassis.
3. Fix two screws on each side, four screws in total.

#### HDD Installation

1. Switch the button to the right side to open the panel.



2. Insert the HDD, close the front panel.



1. Hard drive is a precision device, please read the HDD manual in advance before use.
2. Do not force to close the front panel if inserting the HDD in wrong direction, or the HDD enclosure will be damaged.

#### Ejecting the HDD

1. Switch the button to the right side to open the panel.
2. Remove the HDD, close the front panel.

#### Statement

We provide repair service for defective product, and do not take responsibility for data loss that caused by manual operation mistake.

#### Introduction

The metal removable HDD enclosure can be mounted in the standard 3.5" bay drives found in desktops and workstations. It fits two 2.5" SATA HDD / SSD and operates at speeds up to 6Gbps using 6Gbps HDD and host controllers. It provides reliable data protection and allows HDD hot-swap life cycle for more than 50,000 duty cycles using the patent NSS connector.

#### Product diagram

MRA258L/MRA258LT

#### Lock

Use the key to unlock it by rotating the key 90 degrees counterclockwise.



MRA258AL/MRA258ALT

#### Lock

Use the key to unlock it by rotating the key 90 degrees clockwise.



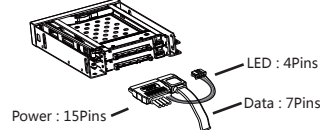
#### Front view

1. Lock
2. Door handle
3. LED indicator



#### Connect the cables

Connect the included cables to the HDD enclosure and to the respective connectors to your computer.



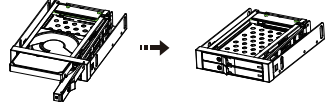
1. Be sure to connect the 4P LED cable from the power cable into the 4P LED port at the back of the HDD enclosure, or the LED indicator will not be lighted up.
2. Avoid anti-static electricity when installing the HDD enclosure

#### HDD Installation

1. If the HDD enclosure is locked, use the key to unlock it. Then pull the door handle and open it.



2. Insert the HDD, close the front panel. Lock the HDD enclosure if needed.



1. Hard drive is a precision device, please read the HDD manual in advance before use.
2. Do not force to close the front panel if inserting the HDD in wrong direction, or the HDD enclosure will be damaged.

#### Ejecting the HDD

1. If the HDD enclosure is locked, use the key to unlock it. Then pull the door handle and open it.
2. Remove the HDD, close the front panel. Lock the HDD enclosure if needed.

1. Please do not remove the drive during working condition.
2. Be aware of the heat since the drive may reach temperature up to 50 °C.

#### Specifications & Package content

##### MRA258



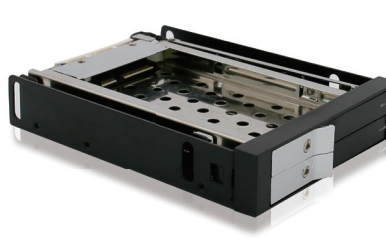
#### Specifications

Interface : SATA / SAS up to 6Gbps  
Supported HDD type : 2 x 2.5" SATA / SAS HDD  
LED indicator : Solid blue LED for power and blinking orange LED for HDD access  
Supported HDD thickness : 9.5mm  
Product Weight : 282.5g  
Product Dimensions : 140(L)x101.6(W)x25(H)mm  
Operating Temperature : 0°~55°C  
Operating Systems : Windows/Mac

#### Package content

SATA data cable (x2) Screw (x4)  
SATA power cable (x2) User manual (x1)

##### MRA258L



#### Specifications

Interface : SATA / SAS up to 6Gbps  
Supported HDD type : 2 x 2.5" SATA / SAS HDD  
LED indicator : Solid blue LED for power and blinking orange LED for HDD access  
Supported HDD thickness : 9.5mm  
Product Weight : 286g  
Product Dimensions : 140(L)x101.6(W)x25(H)mm  
Operating Temperature : 0°~55°C  
Operating Systems : Windows/Mac

#### Package content

SATA data cable (x2) Screw (x4)  
SATA power cable (x2) Key (x1)  
User manual (x1)

##### MRA258AL



#### Specifications

Interface : SATA / SAS up to 6Gbps  
Supported HDD type : 2 x 2.5" SATA / SAS HDD  
LED indicator : Solid blue LED for power and blinking orange LED for HDD access  
Supported HDD thickness : 9.5mm  
Product Weight : 304g  
Product Dimensions : 140(L)x101.6(W)x25(H)mm  
Operating Temperature : 0°~55°C  
Operating Systems : Windows/Mac  
<Aluminum panel>

#### Package content

SATA data cable (x2) Screw (x4)  
SATA power cable (x2) Key (x2)  
User manual (x1)

##### MRA258T



#### Specifications

Interface : SATA / SAS up to 6Gbps  
Supported HDD type : 2 x 2.5" SATA / SAS HDD  
LED indicator : Solid blue LED for power and blinking orange LED for HDD access  
Supported HDD thickness : 7mm  
Product Weight : 314g  
Product Dimensions : 140(L)x101.6(W)x25(H)mm  
Operating Temperature : 0°~55°C  
Operating Systems : Windows/Mac

#### Package content

SATA data cable (x2) Screw (x4)  
SATA power cable (x2) User manual (x1)

##### MRA258LT



#### Specifications

Interface : SATA / SAS up to 6Gbps  
Supported HDD type : 2 x 2.5" SATA / SAS HDD  
LED indicator : Solid blue LED for power and blinking orange LED for HDD access  
Supported HDD thickness : 7mm  
Product Weight : 316g  
Product Dimensions : 140(L)x101.6(W)x25(H)mm  
Operating Temperature : 0°~55°C  
Operating Systems : Windows/Mac

#### Package content

SATA data cable (x2) Screw (x4)  
SATA power cable (x2) Key (x1)  
User manual (x1)

##### MRA258ALT



#### Specifications

Interface : SATA / SAS up to 6Gbps  
Supported HDD type : 2 x 2.5" SATA / SAS HDD  
LED indicator : Solid blue LED for power and blinking orange LED for HDD access  
Supported HDD thickness : 7mm  
Product Weight : 308g  
Product Dimensions : 140(L)x101.6(W)x25(H)mm  
Operating Temperature : 0°~55°C  
Operating Systems : Windows/Mac  
<Aluminum panel>

#### Package content

SATA data cable (x2) Screw (x4)  
SATA power cable (x2) Key (x2)  
User manual (x1)

# MRA258 系列

## 使用說明書

### TOOL FREE SCREW-LESS [ HDD-ROM ] 2 x 2.5" 內置式硬碟抽取盒



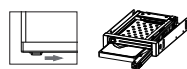
#### 快速安裝指南

#### 產品說明

MRA258/MRA258T

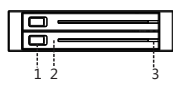
#### 開關鍵

輕輕推動解鎖按鈕(從左至右),使面板彈出。



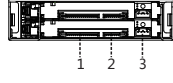
#### 前面板

1. 解鎖按鈕
2. HDD面板
3. HDD LED燈



#### 後面板

1. SATA電源連接器 (15P)
2. SATA數據連接器 (7P)
3. LED訊號連接器 (4P)



#### 安裝



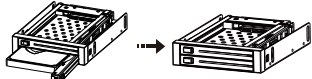
1. 卸下電腦機箱前方3.5" 空槽面板 (軟體驅動器空間)
2. 小心插入抽取盒並推至底使之與機箱前面板平齊,抽取盒孔位與機箱孔位對齊。
3. 每邊使用2個螺絲, 4孔固定。

#### 安裝硬碟基本步驟

1. 輕輕推動HDD-LOCK解鎖按鈕 (從左至右) 使面板彈出。



2. 放入2.5" 硬碟, 再關上面板。



1. 插入硬碟並關上面板時,請小心輕輕推動前面板至鎖住狀態,以免機構零件受損。
2. 如果硬碟插入方向錯誤,請不要關閉前門,如強行關閉,抽取盒會被損傷。

#### 卸下硬碟步驟

1. 輕輕推動抽取盒解鎖按鈕,使面板彈出。
2. 打開前面板,分別取出2.5" 硬碟,再確實關閉上面板。

#### 聲明

用戶手冊所包含的內容均受到版權法的保護未經臺灣寶通科技股份有限公司的批准,任何組織或個人不得以任何手段或形式對其進行複製,存於資料庫或檢索系統。對於在使用硬碟抽取盒過程中所造成的任何損失,寶通科技股份有限公司概不負責。

#### 產品說明

MRA258L/MRA258LT

#### 開關鍵

用鑰匙解鎖三角鎖(逆時針旋轉90度)即可。



MRA258AL/MRA258ALT

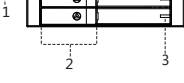
#### 開關鍵

用鑰匙解鎖三角鎖(順時針旋轉90度)即可。



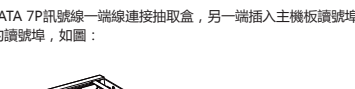
#### 前面板

1. 硬碟抽取開關
2. 硬碟抽取拉門
3. 硬碟訊號指示燈



#### 連接

1. 請將SATA15P端連接至抽取盒之15P端口,大4P電源線與電腦主機電源相連,小4P LED線連接至抽取盒後端之4P LED端。

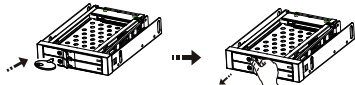


2. 請將SATA 7P訊號線一端連接抽取盒,另一端插入主機板訊號埠或者RAID卡上的訊號埠,如圖:

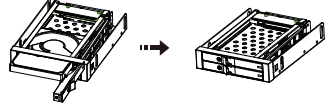
1. 4P LED必須插入抽取盒後端連接埠,否則LED無法亮。
2. 線材與電腦主機或與抽取盒相接觸前,務必確認兩端均無雜物附著在端子表面,以免造成電性短路。

#### 安裝硬碟基本步驟

1. 用鑰匙解鎖三角鎖,拉開硬碟抽取拉門,打開前門。



2. 放入2.5" 硬碟, 再關上面板。



1. 插入硬碟並關上面板時,請小心輕輕推動前面板至鎖住狀態,以免機構零件受損。
2. 如果硬碟插入方向錯誤,請不要關閉前門,如強行關閉,抽取盒會被損傷。

#### 卸下硬碟步驟

1. 使用鑰匙解鎖,拉開硬碟抽取拉門,打開前門。
2. 將硬碟從抽取盒中取出,關好抽取盒前門,使用鑰匙鎖定。

1. 當工作狀態下禁止卸下硬碟。
2. 硬碟表面溫度有可能高達50°C,雖不會造成燙傷,但仍要小心,請接觸硬碟邊緣,不要觸摸上面的電路板。

#### 產品規格&包裝內容

##### MRA258



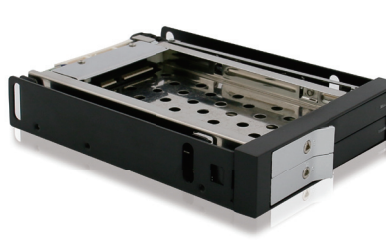
#### 產品規格

作業系統 : Windows/Mac  
傳輸介面 : 支援 SATA I/II/III(6.0Gb/s)適用於2.5" SATA硬碟 支持熱插拔  
LED指示燈 : 電源指示,插入硬碟(藍燈亮) 讀寫指示(燈燈閃爍)  
硬碟厚度 : 9.5mm  
重 量 : 282.5g  
產品尺寸 : 140(L)x101.6(W)x25(H)mm  
工作溫度 : 0°~55°C

#### 包裝內容

SATA7P 訊號線 (x2) 螺絲 (x4)  
SATA15P to 大4P+小4P電源線 (x2) 說明書(x1)

##### MRA258L



#### 產品規格

作業系統 : Windows/Mac  
傳輸介面 : 支援 SATA I/II/III(6.0Gb/s)適用於2.5" SATA硬碟 支持熱插拔  
LED指示燈 : 電源指示,插入硬碟(藍燈亮) 讀寫指示(燈燈閃爍)  
硬碟厚度 : 9.5mm  
重 量 : 286g  
產品尺寸 : 140(L)x101.6(W)x25(H)mm  
工作溫度 : 0°~55°C

#### 包裝內容

SATA7P 訊號線 (x2) 螺絲 (x4)  
SATA15P to 大4P+小4P電源線 (x2) 說明書 (x1)

##### MRA258AL



#### 產品規格

作業系統 : Windows/Mac  
傳輸介面 : 支援 SATA I/II/III(6.0Gb/s)適用於2.5" SATA硬碟 支持熱插拔  
LED指示燈 : 電源指示,插入硬碟(藍燈亮) 讀寫指示(燈燈閃爍)  
硬碟厚度 : 9.5mm  
重 量 : 304g  
產品尺寸 : 140(L)x101.6(W)x25(H)mm  
工作溫度 : 0°~55°C  
<鋁面板>

#### 包裝內容

SATA7P 訊號線 (x2) 螺絲 (x4)  
SATA15P to 大4P+小4P電源線 (x2) 說明書 (x1)

##### MRA258T



#### 產品規格

作業系統 : Windows/Mac  
傳輸介面 : 支援 SATA I/II/III(6.0Gb/s)適用於2.5" SATA硬碟 支持熱插拔  
LED指示燈 : 電源指示,插入硬碟(藍燈亮) 讀寫指示(燈燈閃爍)  
硬碟厚度 : 7mm  
重 量 : 314g  
產品尺寸 : 140(L)x101.6(W)x25(H)mm  
工作溫度 : 0°~55°C

#### 包裝內容

SATA7P 訊號線 (x2) 螺絲 (x4)  
SATA15P to 大4P+小4P電源線 (x2) 說明書 (x1)

##### MRA258LT



#### 產品規格

作業系統 : Windows/Mac  
傳輸介面 : 支援 SATA I/II/III(6.0Gb/s)適用於2.5" SATA硬碟 支持熱插拔  
LED指示燈 : 電源指示,插入硬碟(藍燈亮) 讀寫指示(燈燈閃爍)  
硬碟厚度 : 7mm  
重 量 : 316g  
產品尺寸 : 140(L)x101.6(W)x25(H)mm  
工作溫度 : 0°~55°C

#### 包裝內容

SATA7P 訊號線 (x2) 螺絲 (x4)  
SATA15P to 大4P+小4P電源線 (x2) 說明書 (x1)

##### MRA258ALT



#### 產品規格

作業系統 : Windows/Mac  
傳輸介面 : 支援 SATA I/II/III(6.0Gb/s)適用於2.5" SATA硬碟 支持熱插拔  
LED指示燈 : 電源指示,插入硬碟(藍燈亮) 讀寫指示(燈燈閃爍)  
硬碟厚度 : 7mm  
重 量 : 308g  
產品尺寸 : 140(L)x101.6(W)x25(H)mm  
工作溫度 : 0°~55°C  
<鋁面板>

#### 包裝內容

SATA7P 訊號線 (x2) 螺絲 (x4)  
SATA15P to 大4P+小4P電源線 (x2) 說明書 (x1)