

74mm

TOOL FREE SCREW-LESS TRAY-LESS

[3.5" HDD Enclosure]



MRA210
USER Manual

Support all 3.5" HDD
Patented NSS SAS connector supports
50,000 times hot swap

MRA210 User Manual

Product Specification:

- Support all 3.5" SATA HDD
- Support hot swap
- Support SATA I/II/III (6.0Gb/s)
- Interface: Standard SATA
- Compatible SAS HDD (Conducting one SAS data port only)
- Weight :676g
- Operating humidity: 0 - 55℃

Equipment Required:

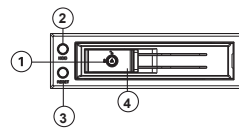
- Operation System
windows 98/ME/2000/XP/2003 Server / vista /7/8 or MAC OS V9.0 above
- A spare 5.25" space in chassis - lack of space MRA210 can not be installed positioning
- A spare SATA power port - MRA210 can not work without SATA power
- A spare SATA data port that is not being suspended

Contents of Product Package:

MRA210 HDD enclosure	1Pcs
SATA data cable	1Pcs
User Manual	1Pcs
Screw	8Pcs
Key	2Pcs

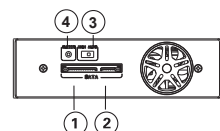
Front panel

1. Key lock
2. Power switch
3. Reset switch
4. Door puller



Rear panel

1. SATA power connector (15P)
2. SATA data connector (7P)
3. Fan controller
4. Buzz alarm switch



Key lock



HDD Enclosure switch

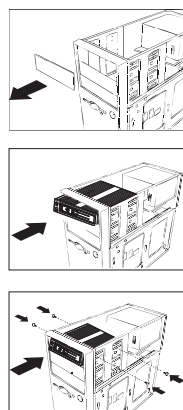


Pull door handle and put HDD into enclosure

Installation

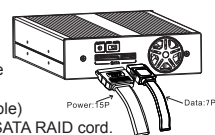
Installation Steps:

1. Remove the cover of an empty drive bay of 5.25" space
2. Smoothly insert MRA210 into the bay and push it inward until its screw hole is aligned with the hole of the bay
3. Use two screws on each side to securely hold the device while installing. The direction must be right. The lock at left, the pivot of the door at right



Connection:

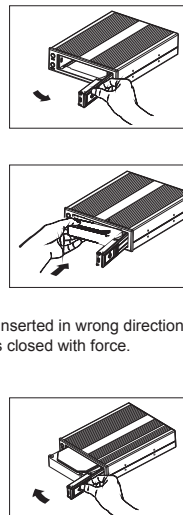
1. Connect one end of the SATA 15P power cable(15P) to the rear side of SATA 15P Power port.
2. Connect the SATA 7P data cable to the connector on the back of MRA210, and another end of (SATA 7P data cable) to the port on the main board or on the SATA RAID cord.



Inserting HDD into MRA210

Steps:

1. Unlock and pull the door puller.
2. Place the HDD (label side up) into MRA210
3. Press the door to push the hard drive into MRA210 until the door is locked



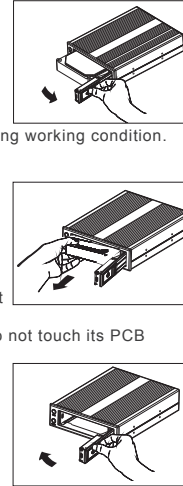
▲ The door will not be closed firmly if HDD is inserted in wrong direction. The MRA210 will get damaged if the door is closed with force.

- If the Operating System is installed in the HDD of MRA210, please turn off the power before replacing the HDD.
- Be careful as HDD is a precision device, please read instruction manual of HDD in advance

Removing Hard Drive

Steps:

1. Unlock and pull the door puller.
2. Carefully take the hard drive out from MRA210
3. Close the front door of MRA210



▲ Please do not remove the HDD during working condition.

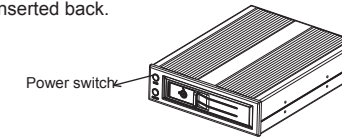
▲ HDD may reach a temperature of 50 degree C. It will not burn hands, but still need to be aware of the heat. Hold the HDD by its edge, please do not touch its PCB

- Do not place debris in MRA210
- Please close the door firmly when not in use. It is to prevent any accidental shock and dust from entering to the interior
- For the security of your data, to prevent others from stealing, please try to use key lock

Function Description

1. Individual power switch

- 1-1. Pressing the power switch button for 3 seconds to power on or off the enclosure, it only works under the HDD is in the enclosure.
- 1-2. The power will be off automatically when the HDD is ejected. The power needs to be power on again when the HDD is inserted back.



2. LED indicator

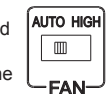
Power indicator	Blue LED is on steady.
Access indicator	Blue LED is blinking.
Fan	LED is blinking when fan alarms. Both Orange and Blue LED are on.
Temperature	Red LED is blinking when temperature is above the setting. Both Blue and Red LED are on.

3. Fan failure alarm

The buzzer alarm when fan failure, Orange LED is blinking. Press Reset switch to cancel the buzzer alarm. Orange LED will be off until the function is back to normal.

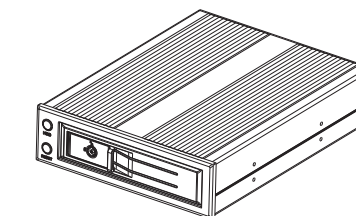
4. Fan speed switch

Auto= In accordance with changes in temperature automatically adjust the fan speed
Hi= Fan will spin at the highest speed when the temperature reaches the setting



Caution

1. If the hard drive is inserted in the wrong direction, do not close the door with force.
2. Please do not remove the HDD during working condition.
3. HDD may reach temperature of 50° degree C. It will not burn hands, but still need to be aware of the heat.
4. Please hold the HDD by its edge and do not touch its PCBA.
5. HDD is a precision device, please read the HDD manual in advance before use.
6. Please do not put anything into MRA210 other than 3.5" HDD.
7. Please always lock the door to secure your data and prevent others from theft or mis-open the door.
8. For this product failure problems, we provide only repair services, but do not take responsibility for data loss that caused by manual operation mistake.



74mm

TOOL FREE SCREW-LESS TRAY-LESS

[3.5吋硬碟抽取盒]



MRA210
使用說明書

支援所有3.5吋硬碟
NSS 專利連接器, 支援五萬次熱插拔

MRA210 使用說明書

產品規格:

- 適用於所有3.5" SATA 硬碟
- 支援熱插拔
- 支援SATA I/II/III(6.0Gb/s)
- 傳輸介面:標準SATA介面
- 相容SAS硬碟(僅導通一個SAS數據主端口)
- 重量:676g
- 工作溫度:0-55℃

配置要求:

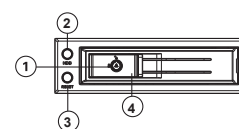
- 操作系统
windows 98/ME/2000/XP/2003 Server/vista/7/8 or MAC OS v9.0 以上
- 一個開置的5.25" 機箱空間
缺乏空間HDD-ROM無法安裝定位
- 一個開置的機箱內SATA電源
缺乏電源MRA210無法工作
- 一個開置的SATA通道
請確認主板上有一個開置的SATA通道,並且未被停用

文件包:

MRA210 硬碟抽取盒	1Pcs
SATA數據線	1Pcs
使用者說明書	1Pcs
螺絲	8Pcs
鑰匙	2Pcs

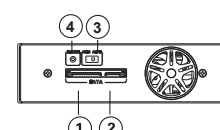
前面板:

1. 鎖
2. 電源開關
3. Reset開關
4. 硬碟抽取開關門



後面板:

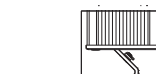
1. SATA 電源連接口 (15P)
2. SATA 數據連接口 (7P)
3. 風扇調速
4. 蜂鳴器開關



鎖:



硬碟抽取開關:

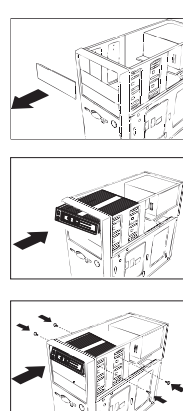


拉開硬碟抽取開關,即可放入硬碟

安裝步驟

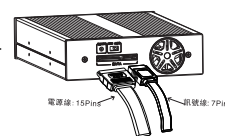
安裝步驟:

- 1.使用電腦主機5.25吋空槽位
- 2.小心插入MRA210,並推動至前面板,使其螺絲孔位對齊至機箱;
- 3.每邊使用2個螺絲,4孔固定;裝置時,方向需正確,門鎖在左,門軸在右



連接:

- 1).將機箱電源SATA 15P接頭插入本產品後端SATA 15P連接器中.
- 2).請將SATA 7P訊號埠一端連接MRA210,另一端插入主機板訊號埠或者RAID卡上的訊號埠,如圖示:



放置硬碟到MRA210

步驟:

- 1.先解鎖,拉開硬碟抽取盒門把手,打開前門;
- 2.放入硬碟(注意硬碟標識向上)到MRA210,並確認硬碟連接接到MRA210中;
- 3.關門並推動硬碟到MRA210鎖好;



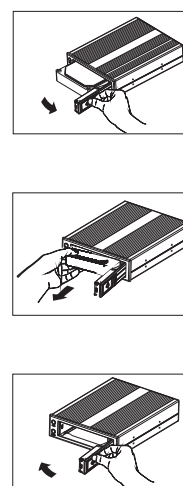
▲ 如果硬碟插入方向錯誤,請勿強行關門,否則將會損害MRA210;

- 如果作業系統安裝在置入MRA210的硬碟中,只有在關閉電源的情況下,才可以抽換該硬碟
- 硬碟是精密設備,要特別注意,請預先閱讀硬碟使用說明書

從MRA210中退出硬碟

步驟:

- 1.拉開MRA210開關,打開前門;
▲ 當工作狀態下禁止卸下硬碟
- 2.從MRA210中取出硬碟:
▲ 硬碟表面溫度有可能高達50℃,雖不會造成燙傷,但仍要小心;請接觸硬碟的邊緣,不要觸摸上面的電路板。
- 3.關好MRA210前門;

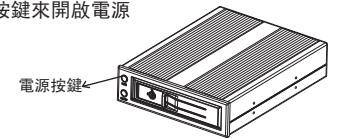


- 請勿在MRA210內部放置雜物
- 不使用時應將門關好,避免意外的撞擊及灰塵進入內部
- 為了您資料的安全,防止他人竊取,請儘量使用防盜鎖

功能使用說明

1 獨立電源開關

- 1.長按電源按鍵3S,開或關掉對應硬碟電源(插槽內有硬碟時有作用,否則按鍵無作用),
- 2.抽出硬碟時會自動斷電,重新插入硬碟時,需要再通過按鍵來開啟電源



2 LED指示燈

電源指示燈	通電後藍色指示燈常亮
讀寫指示燈	藍色指示燈閃爍
風扇	風扇故障報警時,橙色故障指示燈閃爍,橙藍色交替亮
溫度	溫度超過設定上限時,紅色報警指示燈閃爍,紅藍交替

3 風扇故障報警

風扇故障時,蜂鳴器報警,橙色LED閃爍,Reset鍵取消蜂鳴器報警,但橙色燈維持閃爍,直到故障排除。

4 風扇調速開關

Auto=依照溫度的變化自動調整風扇轉速
HI=溫度到達風扇啟動時就以最高速轉動



注意事項

- 1.如果硬碟插入方向錯誤,請勿硬閉前門,以免損害產品.
- 2.當工作狀態下禁止卸下硬碟.
- 3.硬碟表面溫度可能高達50℃,雖不會對您造成傷害,但請小心拿取.
- 4.請拿取硬碟前緣,不要觸摸底部的電路板.
- 5.硬碟是精密設備,要特別留意,請預先閱讀您硬碟本身所附的使用說明書.
- 6.除了3.5吋SATA硬碟以外,請勿在本產品內部旋轉任何雜物.
- 7.為了您的資料的安全,防止他竊取或誤開面板,請儘量將門把手上的鎖保持在“關”的位置。
- 8.對於本產品故障問題,本公司僅提供維修服務,但不承擔因人為操作錯誤或對其他軟體的損害,資料遺失等責任.

