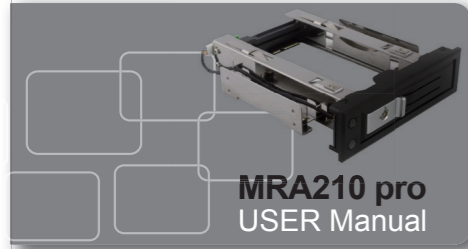


TOOL FREE SCREW-LESS TRAY-LESS

[3.5" HDD Enclosure]

**MRA210 pro
USER Manual**

Support all 3.5" HDD
Patented NSS SAS connector supports
50,000 times hot swap

MRA210Pro User Manual**Product Specification:**

- Support all 3.5" SATA HDD
- Support hot swap
- Support SATA I/II/III (6.0Gb/s)
- Interface: Standard SATA
- Compatible SAS HDD (Conducting one SAS data port only)
- Weight :312g
- Operating humidity: 0 - 55℃

Equipment Required:

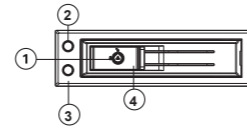
- Operation System
windows 98/ME/2000/XP/2003 Server or MAC OS V9.0 above
- A spare 5.25" space in chassis - lack of space MRA210 Pro can not be installed
- A spare SATA power port - MRA210Pro can not work without SATA power
- A spare SATA data port that is not being suspended

Contents of Product Package:

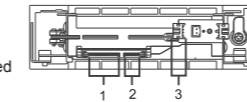
MRA210Pro HDD enclosure	1Pcs
SATA data cable	1Pcs
SATA power cable	1Pcs
User Manual	1Pcs
Screw	8Pcs
Key	2Pcs

Front panel

- 1.Key lock
2. Power indicator
3. Access indicator
4. Door puller

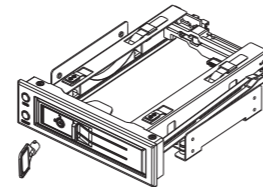
**Rear panel**

1. SATA power connector (15P)
2. SATA data connector (7P)
3. Power & HDD LED are connected through a small 4P connector

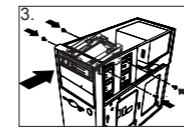
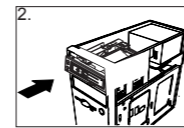
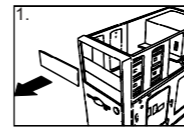
**Key lock**

①Blue blinking for power

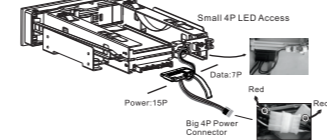
②Red blinking for HDD access

**Installation****Installation Steps:**

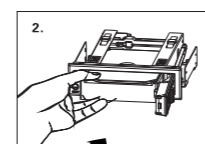
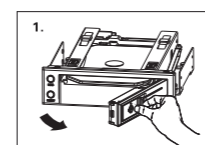
1. Remove the cover of an empty drive bay of 5.25" space
2. Smoothly insert MRA210Pro into the bay and push it inward until its screw hole is aligned with the hole of the bay
3. Use two screws on each side to securely hold the device. The installing direction must be right. The lock at the left, the pivot of the door at the right.

**Connection:**

1. Connect one end of the SATA 15P power cable(15P) to the rear side of MRA210Pro , another end (Molex 4P power) to the power supply from the PC.
2. Connect the SATA7P data cable to the connector on the back of MRA210Pro, another end to the SATA7P data port on the main board or on the SATA RAID card

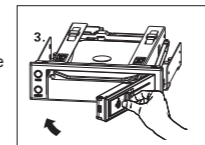
**Inserting Hard Drive****Steps:**

1. Unlock and pull the door puller.
2. Place the HDD (label side up) into MRA210Pro



▲ The door will not be closed firmly if HDD is inserted in wrong direction. MRA210Pro will get damaged if the door is closed with force.

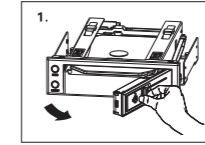
3. Close the door to push the hard drive into MRA210Pro until the door is locked.



- If the Operation System is installed in the HDD of MRA210Pro, Only in the case of power off before they can swap the hard drive
- HDD is a precision device, please read HDD manual before use.

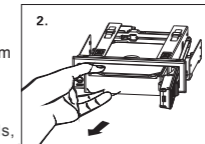
Removing Hard Drive**Steps:**

1. Unlock and pull the door puller



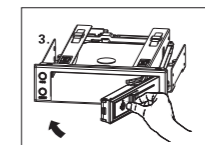
▲ Please do not remove the HDD during working condition

2. Carefully take the hard drive out from MRA210Pro



▲ HDD may reach temperature of 50 degree C. It will not burn hands, but still need to be aware of the heat. Hold the HDD by its edge, please do not touch its PCB.

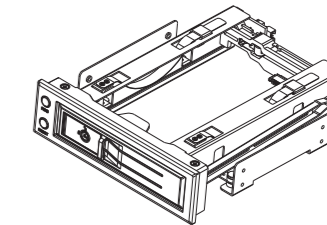
3. Close the front door of MRA210 Pro.



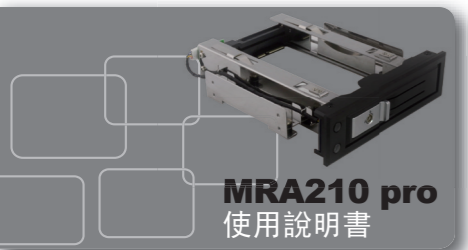
- Do not place debris in MRA210Pro
- Please close the door firmly when not in use, it is to prevent any accidental shock and dust from entering to the interior.
- For the security of your data, to prevent others from stealing, please try to use key lock

▲ Caution

1. If the hard drive is inserted in the wrong direction, do not close the door with force.
2. Please do not remove the HDD during working condition.
3. HDD may reach temperature of 50° degree C. It will not burn hands, but still need to be aware of the heat. Hold the HDD by its edge please do not touch its PCB.
4. Please take the HDD front edge, do not touch the button of PCBA.
5. HDD is a precision device, please read the HDD manual in advance before use.
6. Please do not put anything into MRA210Pro other than 3.5" HDD.
7. Please always lock the door to secure your data and prevent others from theft or mis-open the door.
8. For this product failure problems, we provide only repair services, but do not take responsibility for data loss that caused by manual operation mistake.

**TOOL FREE SCREW-LESS TRAY-LESS**

[3.5吋硬碟抽取盒]

**MRA210 pro
使用說明書**

支援所有3.5吋硬碟
NSS 專利連接器, 支援五萬次熱插拔

MRA210Pro 使用說明書**產品規格:**

- 適用於所有3.5" SATA 硬碟
- 支援熱插拔
- 支援SATA I/II/III (6.0Gb/s)
- 傳輸介面: 標準SATA介面
- 相容SAS硬碟 (僅導通一個SAS數據主端口)
- 重量: 312g
- 工作溫度: 0-55℃

配置要求:

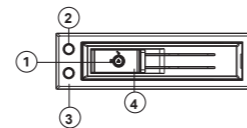
- 操作系統
windows 98/ME/2000/XP/2003 Server or MAC OS v9.0 以上
- 一個開置的5.25" 機箱空間
缺乏空間HDD-ROM無法安裝定位
- 一個開置的機箱內SATA電源
缺乏電源MRA210Pro無法工作
- 一個開置的SATA通道
請確認主板上有一個開置的SATA通道, 並且未被停用

文件包:

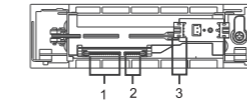
MRA210pro 硬碟抽取盒	1Pcs
SATA數據線	1Pcs
SATA電源線	1Pcs
使用者說明書	1Pcs
螺絲	8Pcs
鑰匙	2Pcs

前面板

1. 鎖
2. 電源指示燈 藍色
3. 讀寫指示燈 橙色
4. 硬碟抽取開關門

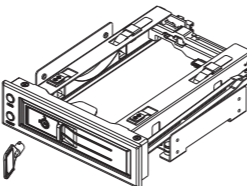
**後面板**

- 1.SATA 電源連接器(15P)
- 2.SATA 數據連接器(7P)
- 3.Power和HDD LED由一組小4P插頭連接

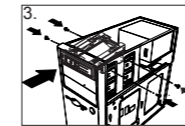
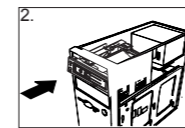
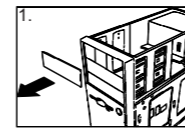
**鎖**

①電源指示燈-藍色燈閃爍

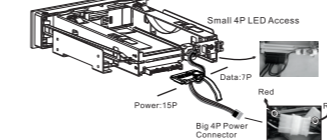
②讀寫指示燈-紅色燈閃爍

**安裝步驟****安裝步驟:**

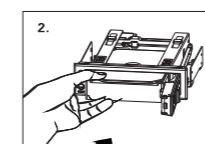
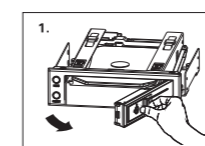
- 1.使用電腦主機5.25吋空槽位
2. 小心插入MRA210Pro, 並推動至前面板, 使其螺絲孔位對齊至機箱孔位:
3. 每邊使用2個螺絲, 4孔固定; 裝置時, 方向需正確, 門鎖在左, 門軸在右

**連接:**

- 1.取出SATA 15P電源線, 將一端(SATA 15P)接於MRA210PRO 後端的連接器介面, 另一端(大4P電源)與機箱內的大4P電源介面相接, 請注意相接時兩端線材顏色需一致
- 2.取SATA 7P數據線, 並分連接於MRA210Pro後端的連接器口與主機(或SATA陣列卡)上的SATA 7P介面上。

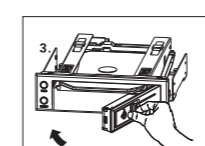
**放置硬碟到MRA210Pro****步驟:**

- 1.先解鎖, 拉開硬碟抽取盒門把手, 打開前門:
- 2.放入硬碟(注意硬碟標識向上)到MRA210pro, 並確認硬碟連接到MRA210pro中:



▲ 如果硬碟插入方向錯誤, 請勿強行開門, 否則將會損害MRA210Pro;

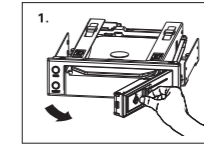
3. 關門並推動硬碟到MRA210Pro鎖好:



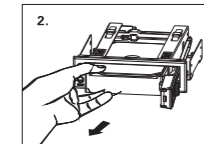
- ▲ 如果作業系統安裝在置入HDD-ROM的硬碟中, 只有在關閉電源的情況下, 才可以抽換該硬碟
- 硬碟是精密設備, 要特別注意, 請預先閱讀硬碟使用說明書

從MRA210Pro中退出硬碟**步驟:**

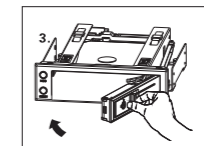
1. 拉開MRA210Pro開關, 打開前門:
▲ 當工作狀態下禁止卸下硬碟



2. 從MRA210Pro中取出硬碟:
▲ 硬碟表面溫度有可能高達50℃, 雖不會造成燙傷, 但仍要小心; 請接觸硬碟的邊緣, 不要觸摸上面的電路板。



3. 關好MRA210Pro前門:



- 請勿在HDD-ROM內部放置雜物
- 不使用時應將門關好, 避免意外的撞擊及灰塵進入內部
- 為了您資料的安全, 防止他人竊取, 請儘量使用防盜鎖

▲ 注意事項

1. 如果硬碟插入方向錯誤, 請勿硬開前門, 以免損害產品。
2. 當工作狀態下禁止卸下硬碟。
3. 硬碟表面溫度可能高達50℃, 雖不會對您造成傷害, 但請小心拿取。
4. 請拿取硬碟前緣, 不要觸摸底部的電路板。
5. 硬碟是精密設備, 要特別留意, 請預先閱讀您硬碟本身所附的使用說明書。
6. 除了3.5吋SATA硬碟以外, 請勿在本產品內部旋轉任何雜物。
7. 為了你的資料的安全, 防止他人竊取或誤開面板, 請儘量將門把手上的鎖保持在“關”的位置。
8. 對於本產品故障問題, 本公司僅提供維修服務, 但不承擔因人為操作錯誤或對其他軟體件的損害資料遺失等責任。

